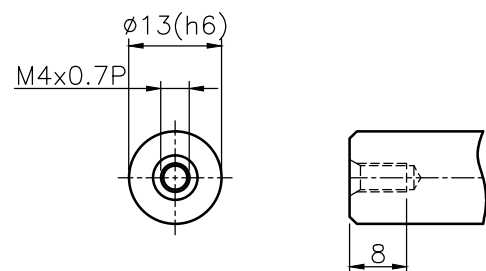


Shaft Option 1(K)



Shaft Option 2(S)

Inertia: 0.01~0.02kg\*cm<sup>2</sup>

Mass: ≈0.7kgs

Shaft Option S : Smooth output shaft(Standard)

Shaft Option K : Output shaft with keyway

Reduced Backlash ≤ 8 arcmin

Standard Backlash ≤ 10 arcmin

Bushing Supplied, when the motor shaft Dia. is small than φ8 (Input Shaft Dia.)

General Tolerance		
6- 50 mm	±0.1	
50- 120 mm	±0.2	
120- 315 mm	±0.3	
315- 1000 mm	±0.5	



科駿精密工業股份有限公司  
KOJIN PRECISION INDUSTRIAL CO., LTD.  
TEL: 04-22798586 FAX: 04-22798453

圖號	MF40H-L2			Name	Date	設計	B
圖名	組合圖 □30-PCD □45-M3			Drawing		設計	C
比例	1 : 1	版次	A	Check		變更	D
				Approv.			E